

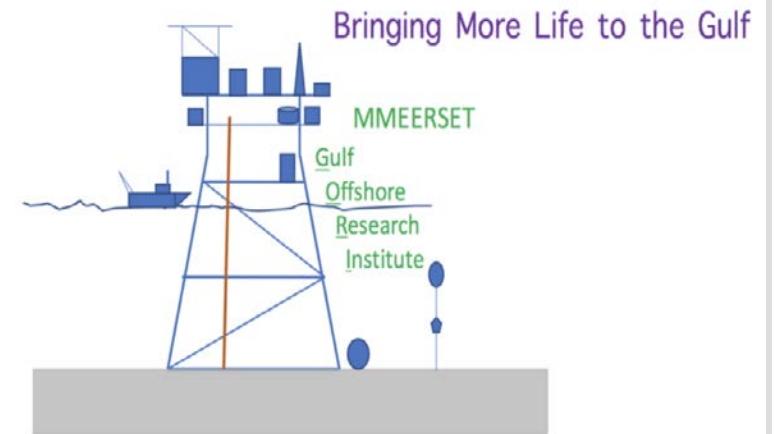
# MMEERSET Stations and the Blue Economy

September 3, 2019

IP position:

N/A

9/3/2019



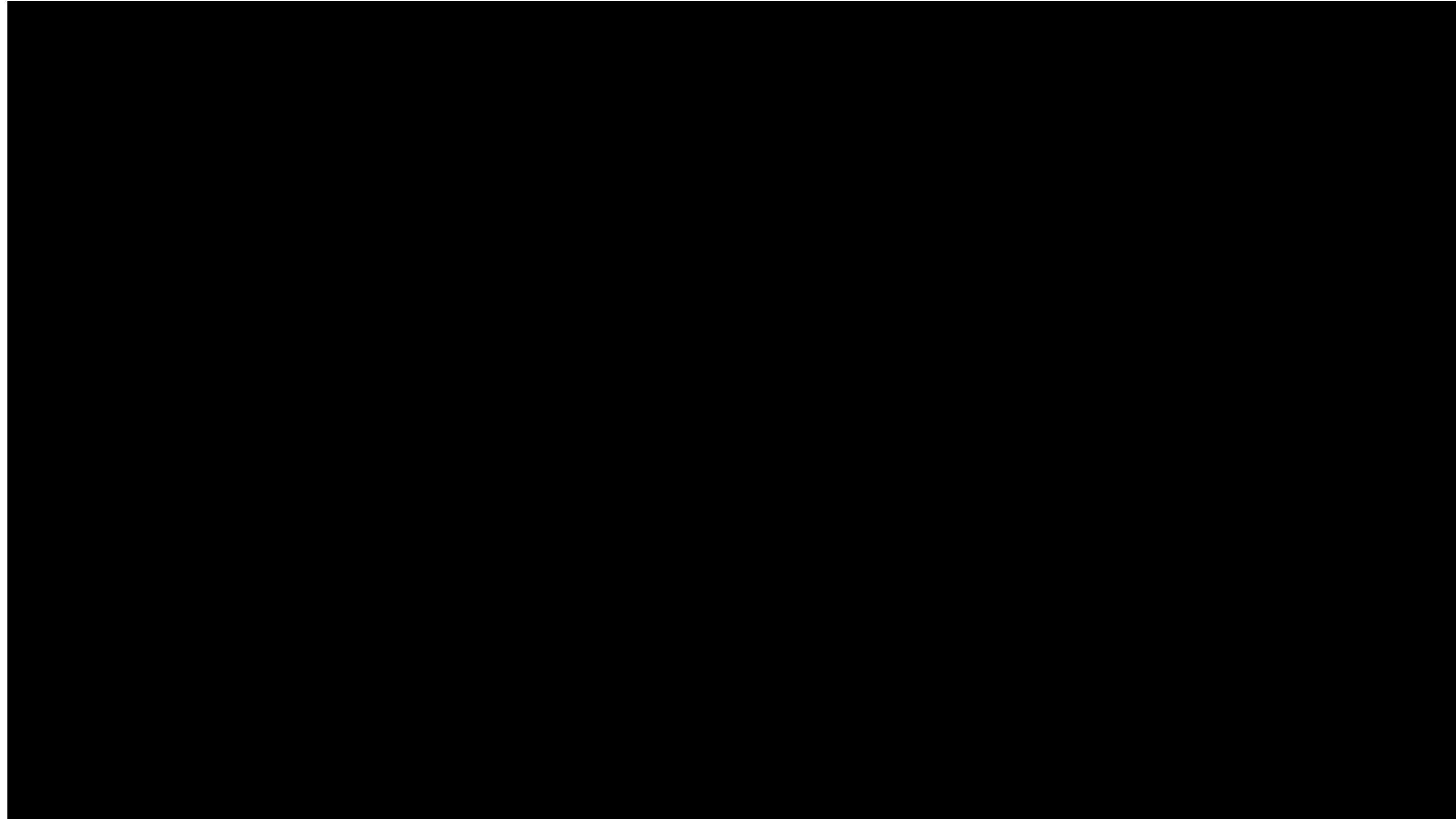
Company representative:

Kent Satterlee, Executive Director GORI

Company name:

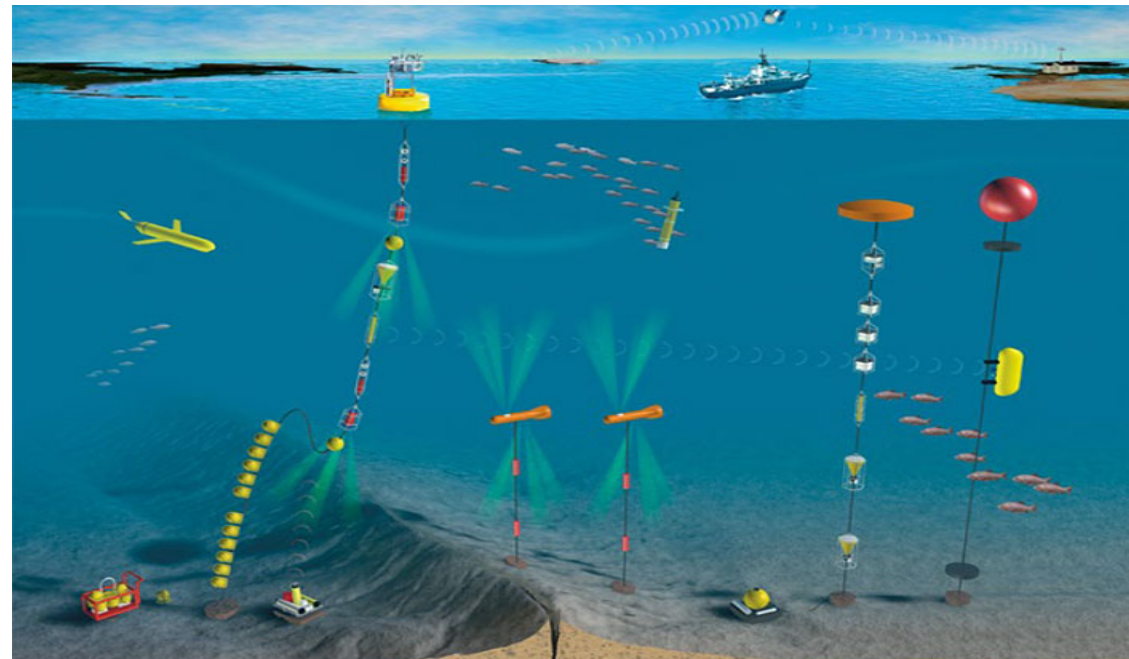
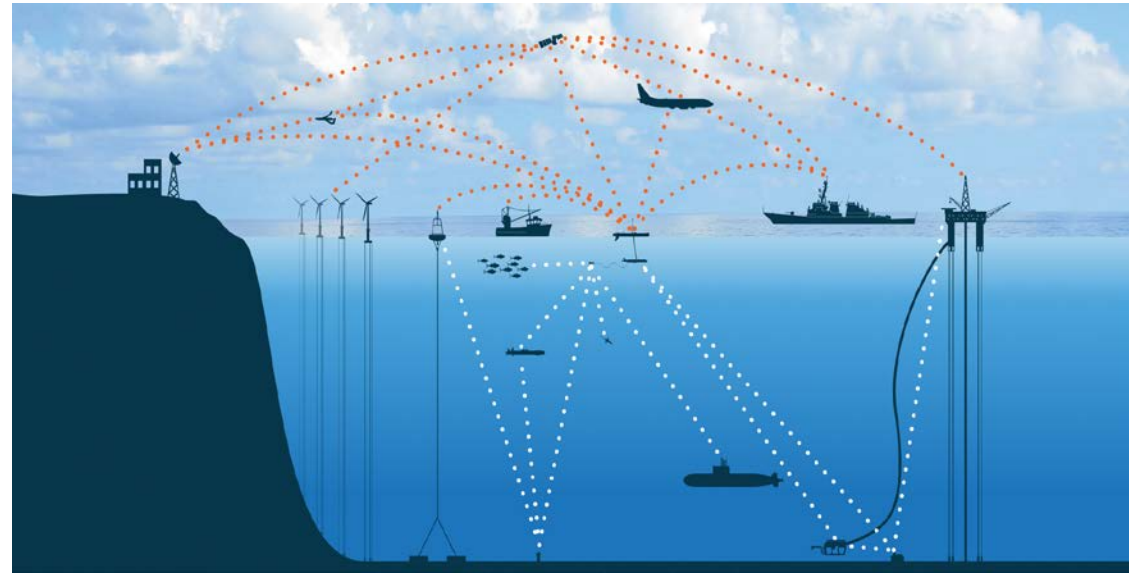
Gulf Offshore Research Institute (GORI)

☐ Not-for-profit 501(c)3



# MMEERSET

Marine Monitoring,  
Energy,  
Environmental Research,  
Science Education, and  
Irrigation



# Team

**Kent Satterlee** – Executive Director and Board Member  
Retired Shell, Civil/Environmental Engineer, Policy & Government Affairs

**Rob Fondren** – Board President  
Real Estate Developer, Executive Fondren Foundation,  
Walter Fondren (Father) founded the Coastal Conservation Association (CCA)

**Patrick Murray** – Board Vice President  
President CCA

**Dr. Greg Stunz** – Board Member  
Harte Research Institute Professor, Fisheries



**Gulf Offshore  
Research Institute**

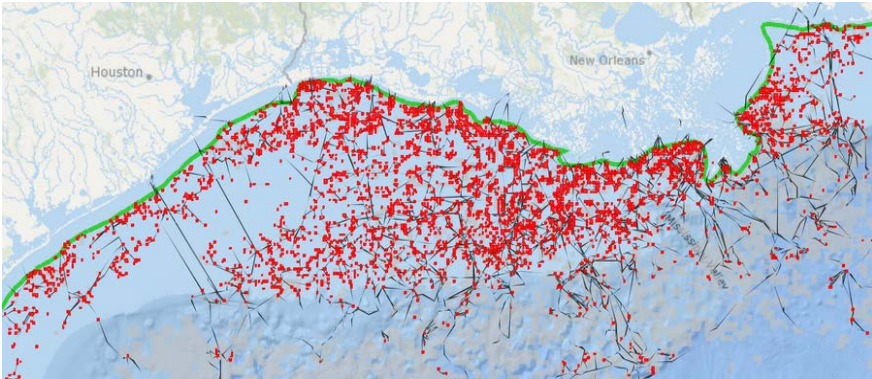
# Why, What?



# Offshore Real-Estate Development

## Problem:

- Platform abandonment liability
- Ecological loss
- Demand for offshore real-estate



Gulf of Mexico Platforms

## Solution:

Oil & Gas  
Operator



Platform  
Tenants

GORI  
(Landlord)



**Gulf Offshore  
Research Institute**

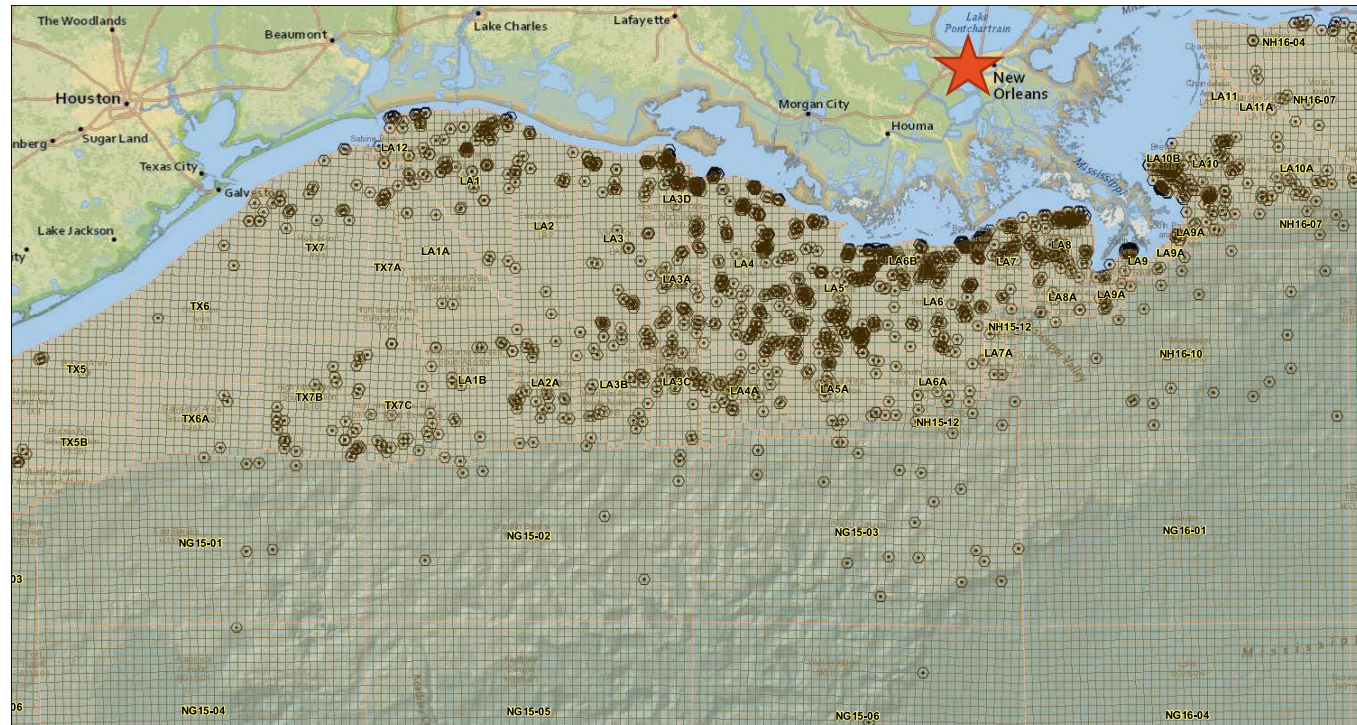


# Why Now?

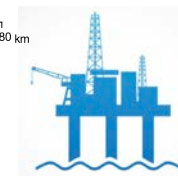
Energy and Ocean  
Policies are Aligned

Half the Platforms  
Are Gone

Being Removed at  
175/Year

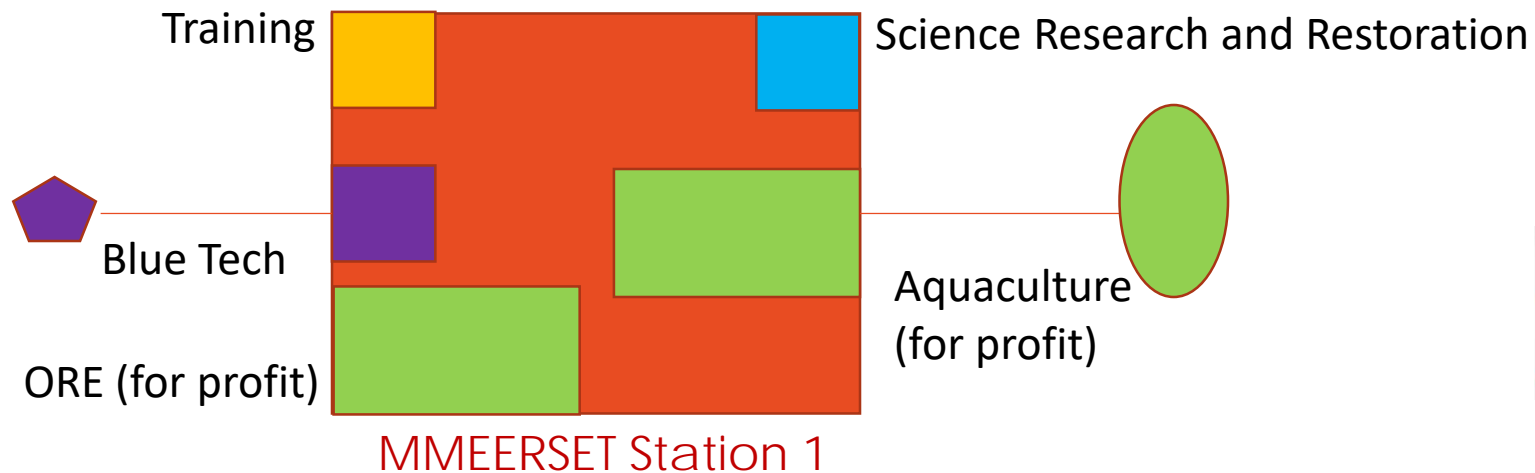
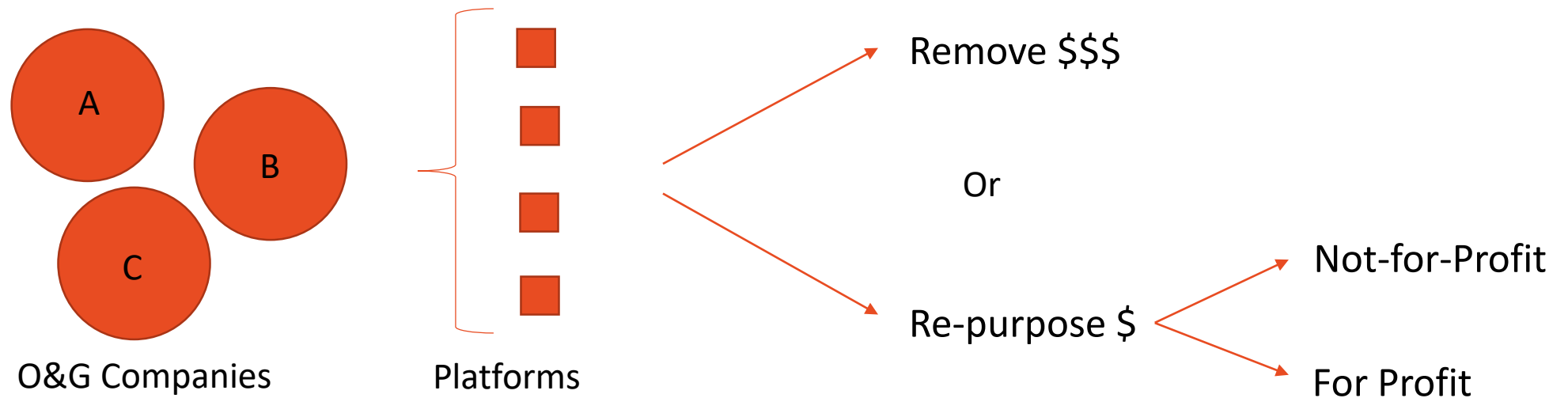


0 20 45 90 180 km



**Gulf Offshore  
Research Institute**

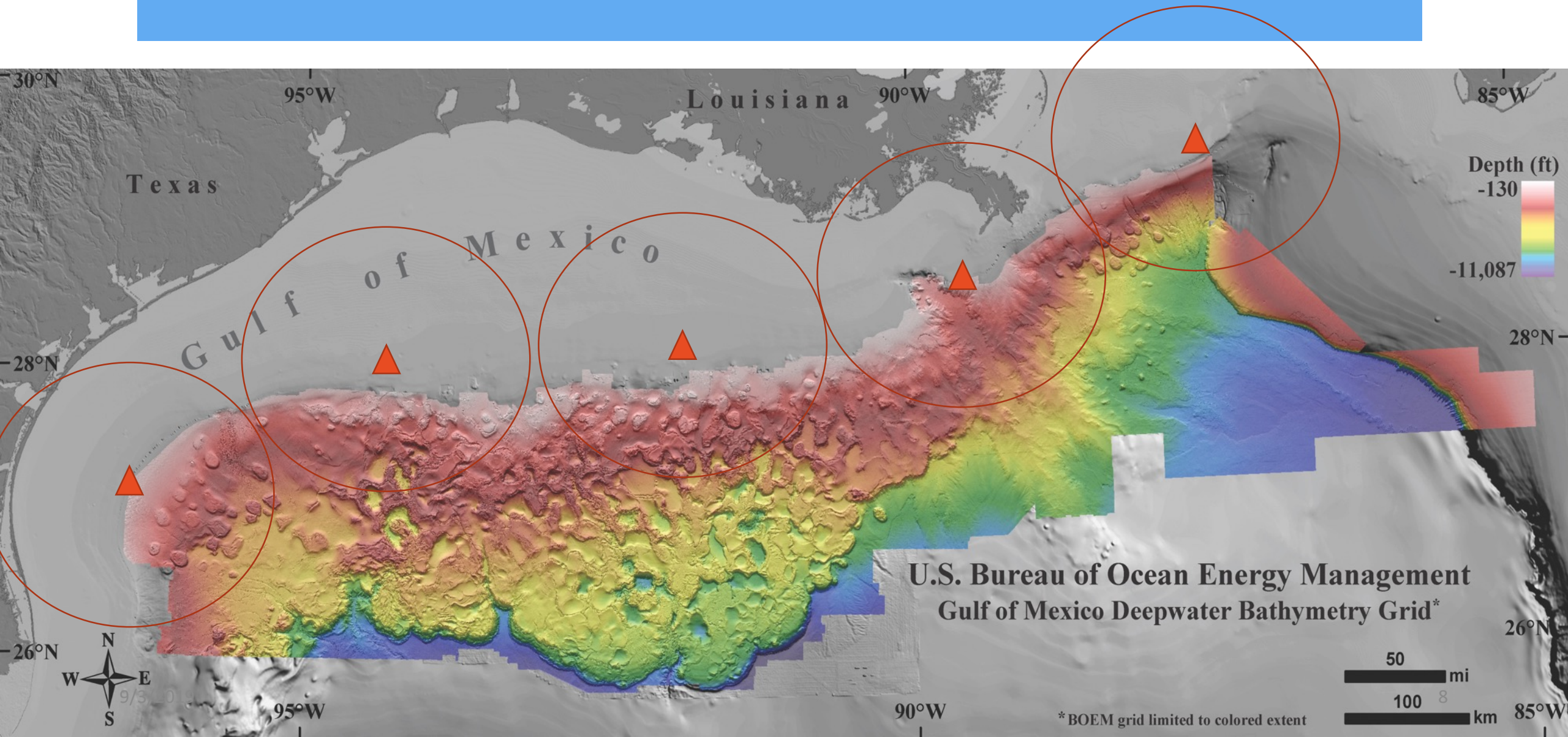
# Idea in Brief



**Gulf Offshore  
Research Institute**

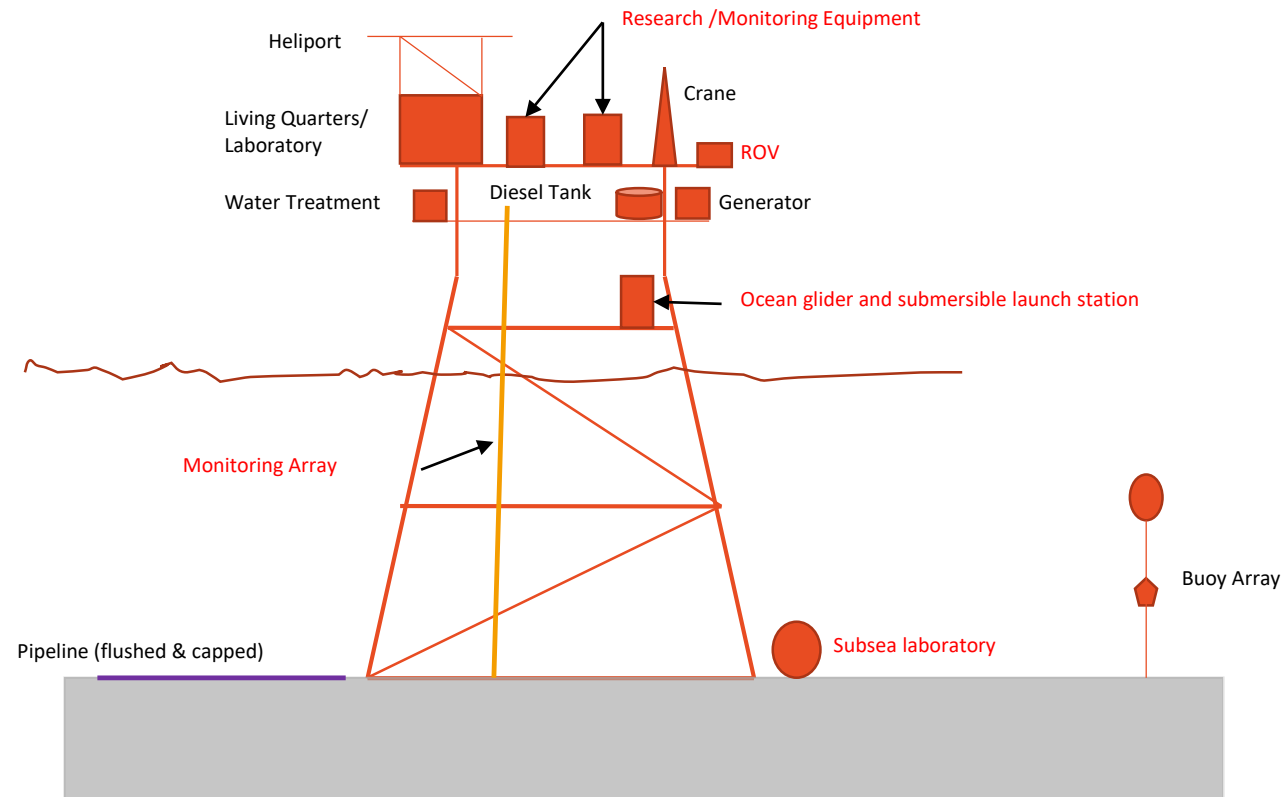


# Potential Locations for MMEERSET Stations





# MMEERSET Station

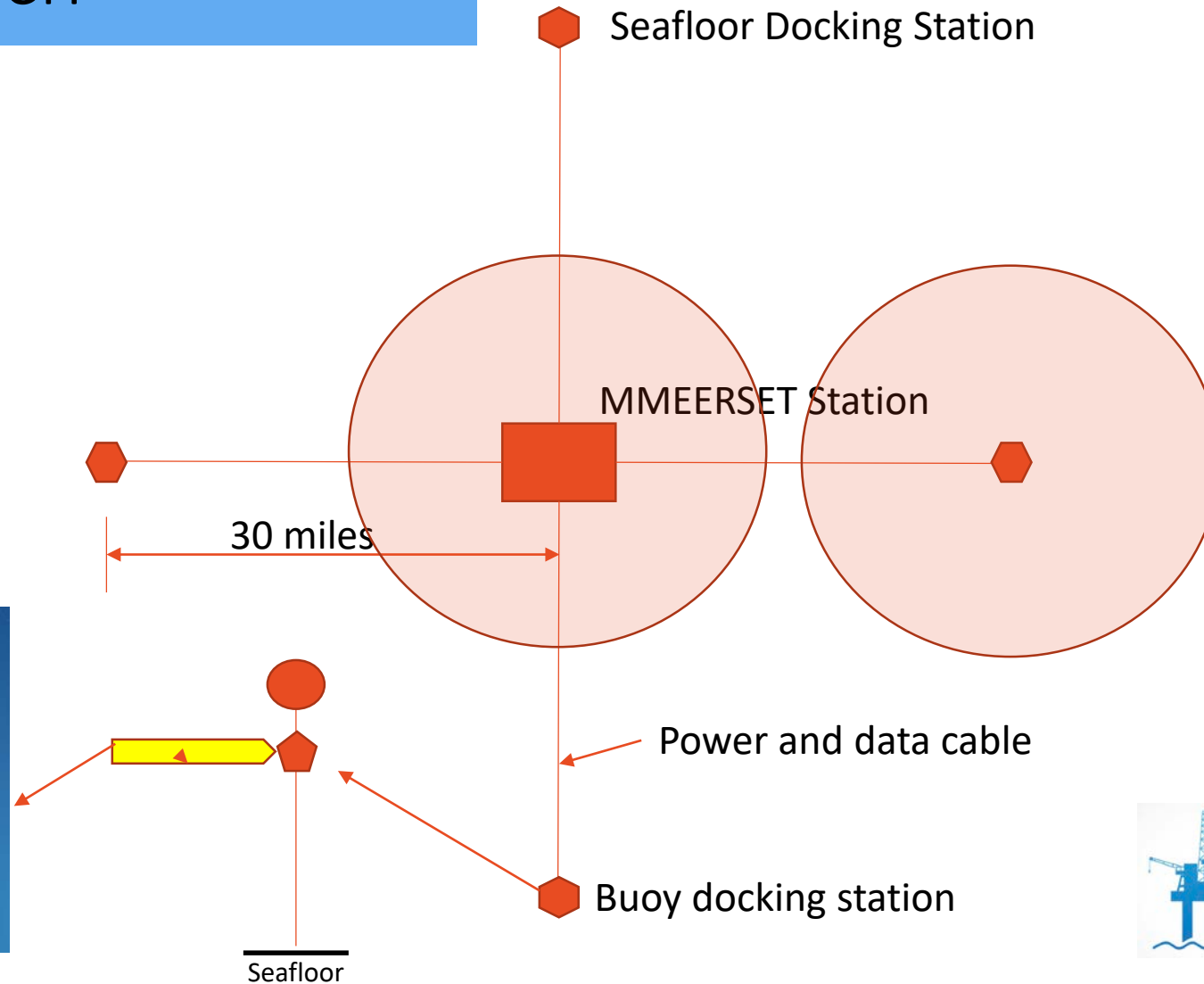


**Gulf Offshore  
Research Institute**

# MMEERSET Seafloor Docking Stations – Blue Tech

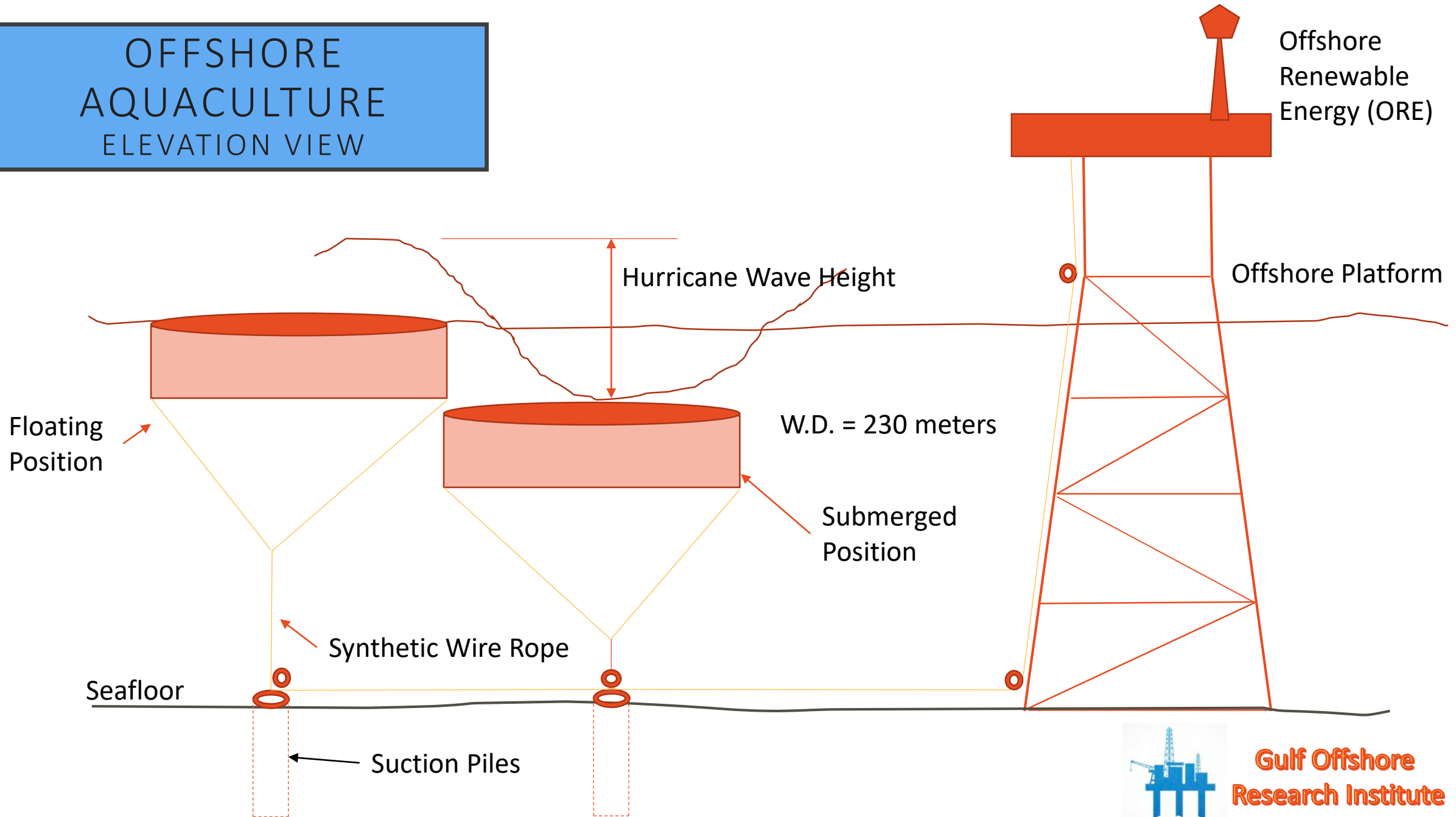


9/3/2019



**Gulf Offshore  
Research Institute**

# OFFSHORE AQUACULTURE ELEVATION VIEW

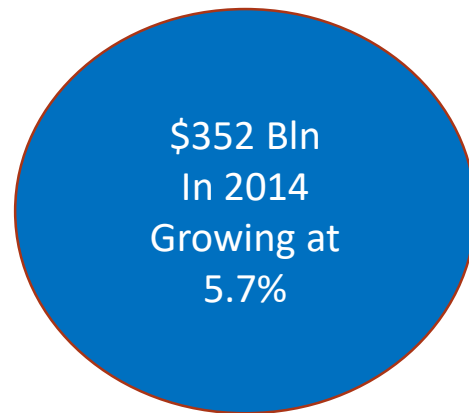


**Gulf Offshore  
Research Institute**

# Markets Size

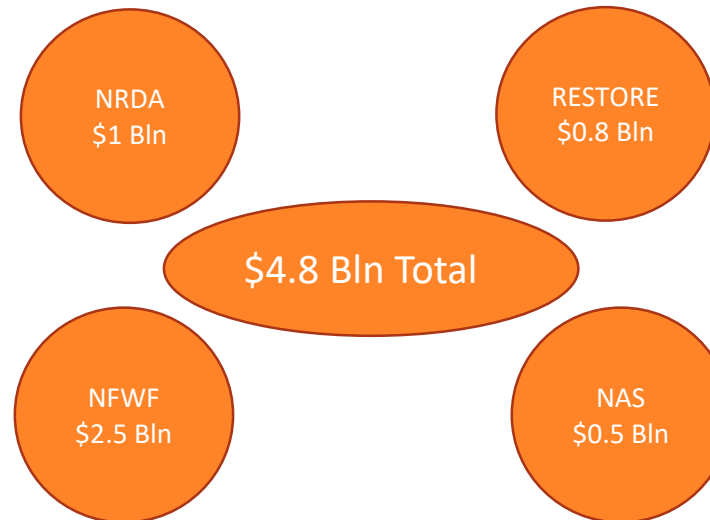
## U.S. Ocean Economy / Blue Tech

### Phase 1



## MMEERSET Post-spill GOM Restoration

### Phase 2

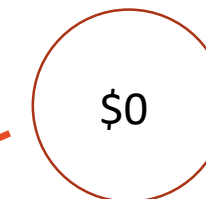


## Norway Aquaculture

### Phase 3



## U.S. Offshore Aquaculture



Over 90 percent of the seafood in the **United States** is imported, 50 percent of which is derived from **aquaculture**.



**Gulf Offshore  
Research Institute**

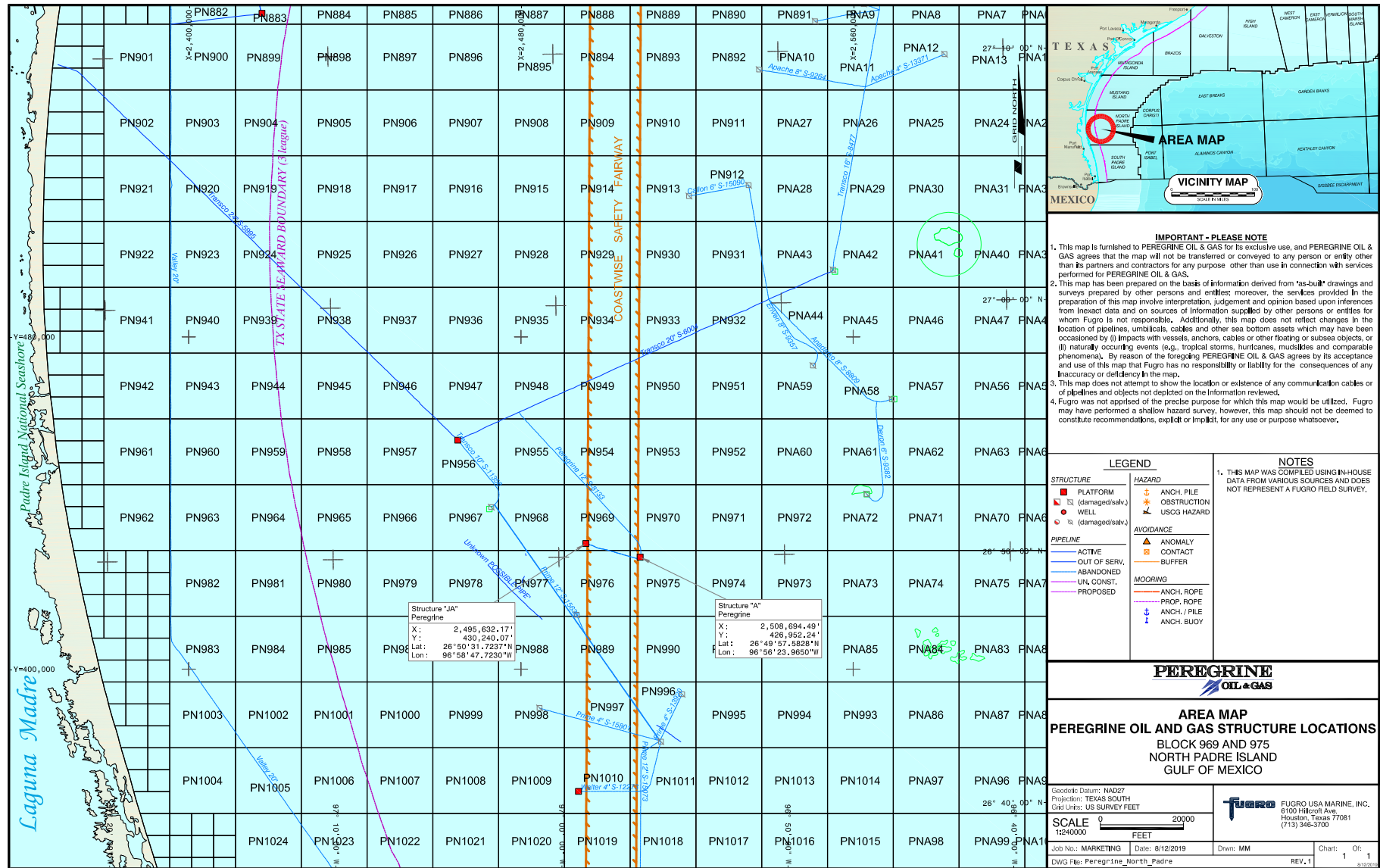


# Peregrine-GORI-Excipio Energy

- GORI and Excipio will assist Peregrine Oil and Gas in converting two of its platforms
- Alt Use RUE Request (30 CFR 585 Subpart J) filed with BOEM



**Gulf Offshore  
Research Institute**



# Alternative Uses for PN 975/969

- Offshore Renewable Energy
- Gulf of Mexico Snapper and other reef fish studies
- Harte Research Institute acoustic arrays
- NOAA NRDA Open-ocean Restoration for BP oil spill
- Autonomous Underwater Vehicle operations
- National Oceanographic Partnership Program (NOPP)
- NOAA and State of Texas oil spill monitoring
- RESTORE Council restoration
- Offshore aquaculture (fish farming)



**Gulf Offshore  
Research Institute**

# PNI 975/969 MMEESET Station and ORE Schedule

[illegible]



# Thank You

Contact:  
[kent@gulfoffshorereseach.com](mailto:kent@gulfoffshorereseach.com)

9/3/2019



**Gulf Offshore  
Research Institute**

# Idle Iron Status – From BSEE Data

- 90% of GOM platforms on expired leases are in overtime (> 1 year)
- Range is 30 days to 5000 days
- Median is 900 days
- PN 975/969 are at 1500 days
- Western GOM platforms are generally in overtime longer
- 14 platforms are held by RUE

